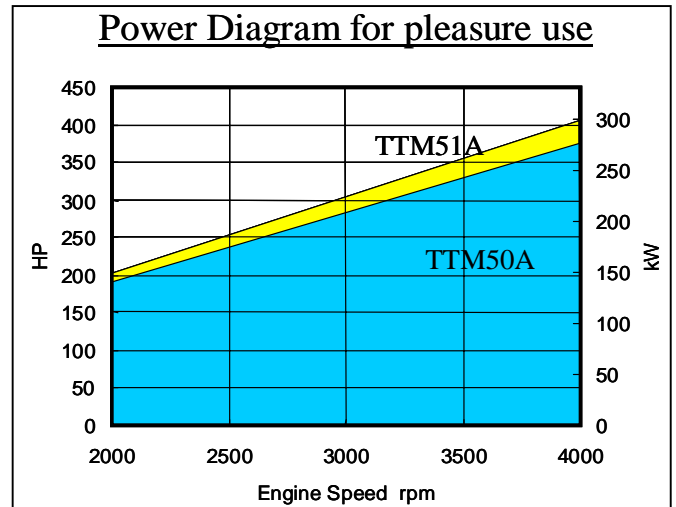


Marine Gear TTM50A (Hydraulic)



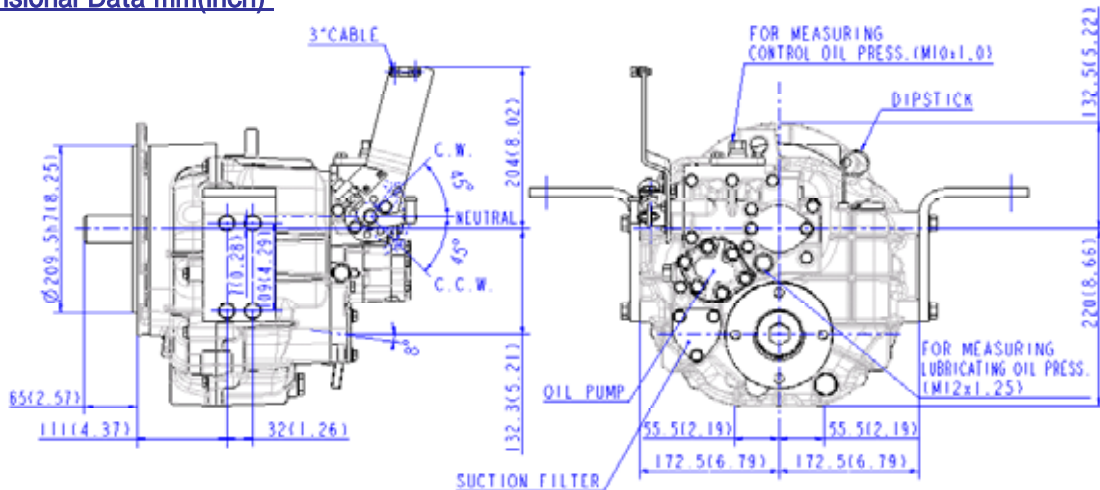
Specifications

Model		TTM50A		
Clutch Type		Hydraulically actuated multi-disc clutch		
Input torque capacity (MAX. rpm)		660N.m (5500rpm)		
Reductionratio	Forward	1.61	1.97	2.44
	Reverse	1.61	1.97	2.44
Direction of rotation (viewed from stern)	Input shaft	Counter-clockwise		
	Output shaft	Clockwise and counter-clockwise		
Lubricating oil		SAE#30(without multi-grade oil)		
Lubricating oil capacity		1.8 liter [0.48gal.]		
Dry weight		43.0kg [94.6 lb](with Borg Warner flange, without foot)		

"Borg Warner is standard flange". (Option : SAE# size available)

Trolling Valve and/or PTO available as option.

Dimensional Data mm(inch)



Specifications and design are subject to change without notice.



KANZAKI KOKYUKOKI MFG. CO., LTD.

Address: 2-18-1 INADERA, AMAGASAKI, HYOGO, 661-0981 JAPAN
 Tel : 81-6- 6494-6737 Fax: 81-6- 6494-6829
 Homepage : <http://www.kanzaki.co.jp>



TUFF TORQ CORP.

Address: 5943 Commerce Blvd. Morristown, Tennessee 37814 USA
 Tel : 1(423) 585-1971 Fax: 1(423) 585-2003